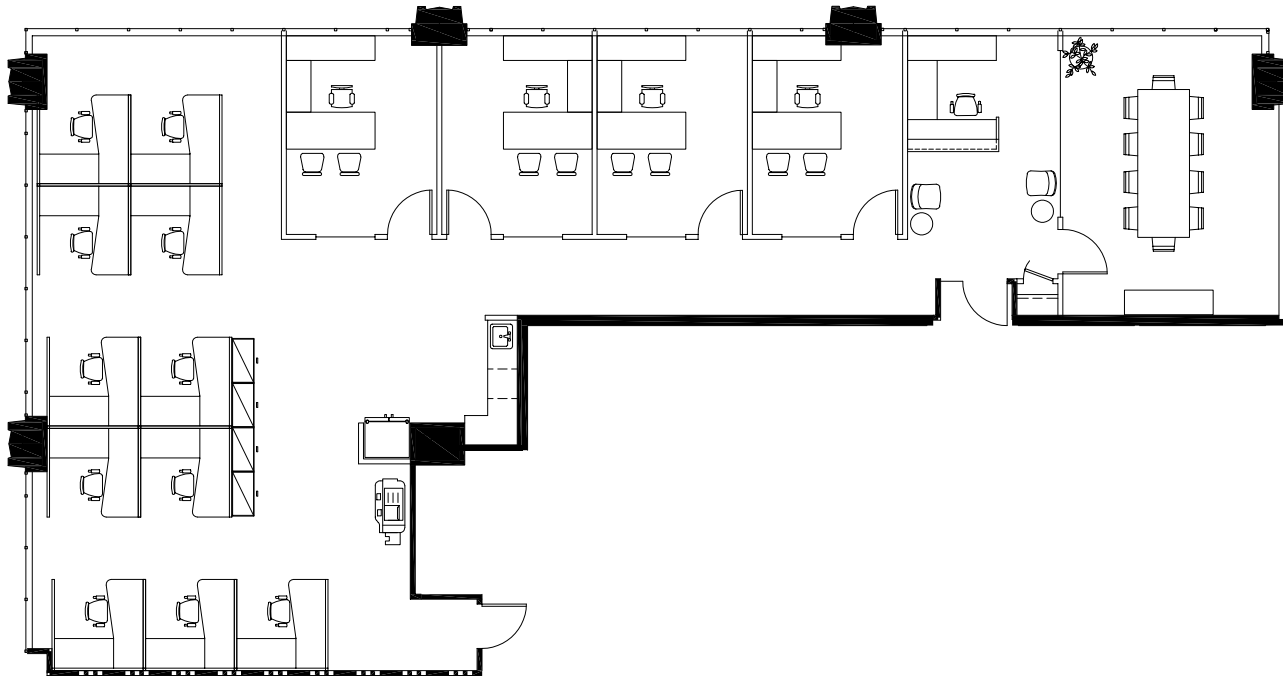


# 700

17TH STREET

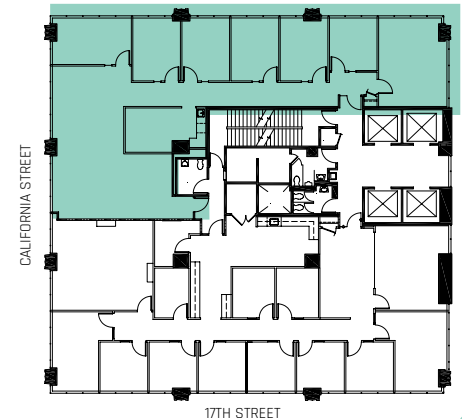
SUITE 1200  
PLANNED SPEC  
2,960 RSF



### Suite Highlights:

- Western views
- Reception
- 4 offices on glass
- Conference room
- Bullpen
- Break area
- Hypothetical furniture layout

### Key Plan:



### FOR MORE INFO, PLEASE CONTACT:

**Bo Pitto**  
+1 303 260 6529 | [bo.pitto@jll.com](mailto:bo.pitto@jll.com)

**John Beason**  
+1 303 217 7949 | [john.beason@jll.com](mailto:john.beason@jll.com)

© 2022 Jones Lang LaSalle Brokerage, Inc., a licensed real estate broker. All rights reserved. All information contained herein is from sources deemed reliable; however, no representation or warranty is made to the accuracy thereof.

